

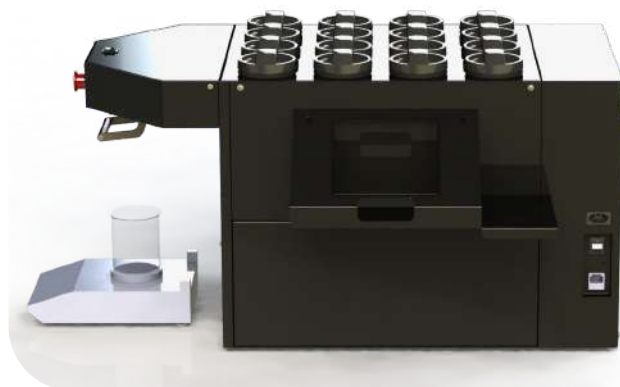


percolore
EQUIPAMENTOS TINTOMÉTRICOS

KuboLAB Gravimetric Dispenser

PRECISION SEQUENTIAL DISPENSING

- **Ease of use and compact design;**
- **Individual pumps and motors,** ensuring high precision in dosing and **repetition of formulas;**
- **Automatic colorant stirring** mechanism to avoid **drying out or depositing** in the canisters;
- **Anti-clogging system:** prevents colorants from **drying out** in the dosing nozzles;
- **Integrated scale with three decimal places;**



Model KuboLab

Dispensing mode Sequential

Dispensing system
Progressive cavity pump

Colorant compatibility
Water-based textile

Dimensions

| | | |
|--------|-------|--------|
| 1250mm | 632mm | 670mm |
| height | width | length |

Transport packaging

| | | |
|--------|-------|--------|
| 1500mm | 750mm | 870mm |
| height | width | length |

Tanks 16 canisters

Tank material Polyacetal

Tank capacity 2 liters

Minimum dispensing 0.03g
Sequential dispensing flow rate
300 ml/min

Structure Metallic

Scale reading
Real-time communication

Weight 96kg
130kg (transport)

110/220V | 50-60 Hz | 5A | 120W